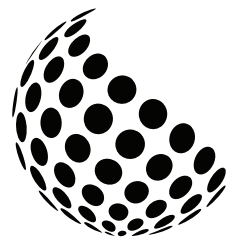


After Installation *Instructions*



***Your Partners in
everything Solar.***

**EFS
SOLAR**

After Installation

Instructions

Here are a few easy steps to follow with your new solar system. The inverter is pretty basic, once its going it's set and forget.

The main thing you want to keep an eye on is that there's always a green light on during the day. If it's ever red and flashing it means it's got a fault. We recommended restarting the inverter, to do this you just follow the shutdown procedure sticker that's on the inverter.

The sticker reads

SHUTDOWN PROCEDURE

1. Turn off the “Main Switch (Inverter Supply)” or A.C Isolator
2. Turn off the “PV Array D.C Isolator” located at the inverter.

WARNING: Do not open plug and socket connectors or PV Array D.C isolator under load.

WARNING: PV array D.C Isolators do not de-energise the PV array and array cabling

Start-up procedure is the reverse of the Shutdown Procedure

If the fault is still there when it fully restarts give the office a call (0800428557) and we will send someone out to fix it for you.

The main information on the inverter to keep an eye on is the e-today, that's what the inverter has produced for the day. If you have a look at it before the sun goes down it will tell you what it's done for the whole day. On average for your system you want to be seeing approx 26kw for the day this is based off your system being 6.5kw. Obviously on an overcast day it will be a little less.

The (PAC) on the inverter screen is what the inverter is currently producing at that moment.

Energizer Solar App

The monitoring app for Energizer Inverters is called "Energizer Solar". On the day of your install the technicians will connect your inverter and set up an account for you. Once setup, you will receive an email from Energizer containing your login details.

New Zealand Commissioning Process

Once your system is installed, we will complete the commissioning and provide you with a COC (Certificate of Compliance). At this stage, your system will remain switched off.

Next, an independent Electrical Inspector will attend your property to carry out the inspection. After this inspection, they will issue us with an ROI (Record of Inspection).

When both the COC and ROI have been issued, you can then contact your electricity provider to arrange for your meter to be changed or recalibrated. Please do not switch electricity providers during this stage, as doing so can restart the process.

Once your electricity provider has updated your meter, you are able to turn the system on and begin using it.

The full process generally takes around 4-6 weeks from the day of installation.

If you have any questions at all, please don't hesitate to reach out to our team.

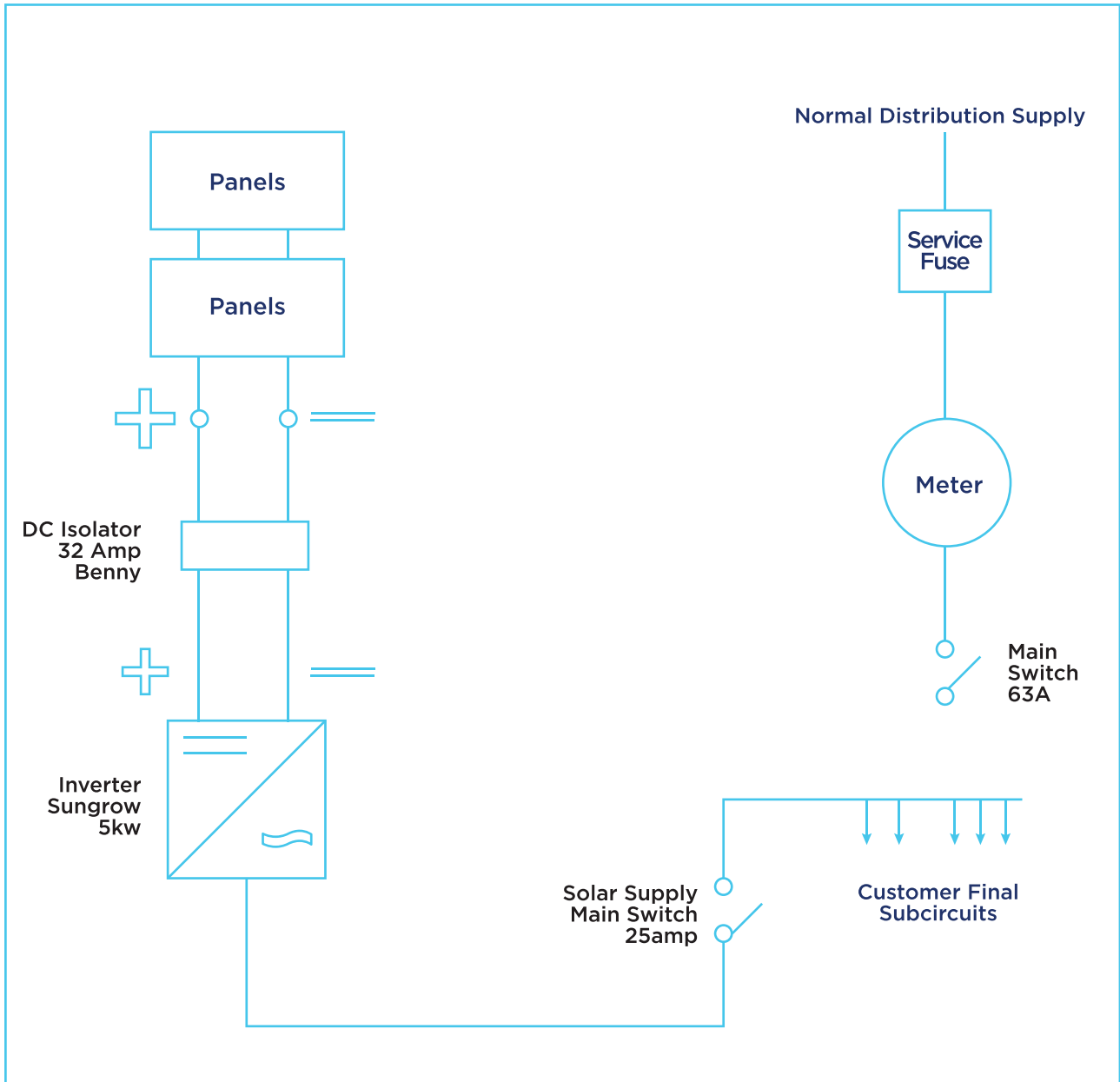
Disclaimer:

EFS Solar has no control over how long the change over process takes as it is all dependant on the power providers availability. While we endeavour to ensure that your system is turned on at the time the meter is changed over, ***IT IS UP TO YOU TO DOUBLE CHECK THAT IT IS ON AND WORKING.*** For information on how to check if your system is operating correctly, please refer to page 1 of this document.

Wiring Installation	Verify mechanical integrity of conduits	5 year	Replaced Damaged Conduit
	Verify insulation integrity of cables installed without conduit.	5 year	Replaced damaged cable
	Check junction boxes for - (a) tightness of connections; (b) water accumulation/build-up; (c) integrity of lid seals; (d) integrity of cable entrance and/or conduit sealing; and (e) integrity of clamping devices. Verify the following: (i) Blocking diodes. (ii) Surge arresters for degradation.	1 year	Replace defective seals, clamps blocking diodes and surge arresters
	Check connections for— (a) tightness; and (b) corrosion.	1 year	
Electrical characteristics	Measure open circuit voltages	1 year	
	Measure short circuit currents	1 year	
Protective devices	Verify integrity of fuses and fuse holders	1 year	
	Verify operation of CBS and RCDs	1 year	
	Verify operation of fault protection system	1 year	
	Verify operation of solar array isolation device	1 year	
Mounting structures	Verify tightness and integrity of bolts and other fastening devices	1 year	
	Inspect for corrosion	5 year	

Wiring Installation	Verify mechanical integrity of conduits	5 year	Replaced Damaged Conduit
	Verify insulation integrity of cables installed without conduit.	5 year	Replaced damaged cable
	Check junction boxes for - (a) tightness of connections; (b) water accumulation/build-up; (c) integrity of lid seals; (d) integrity of cable entrance and/or conduit sealing; and (e) integrity of clamping devices. Verify the following: (i) Blocking diodes. (ii) Surge arresters for degradation.	1 year	Replace defective seals, clamps blocking diodes and surge arresters
	Check connections for— (a) tightness; and (b) corrosion.	1 year	
Electrical characteristics	Measure open circuit voltages	1 year	
	Measure short circuit currents	1 year	
Protective devices	Verify integrity of fuses and fuse holders	1 year	
	Verify operation of CBS and RCDs	1 year	
	Verify operation of fault protection system	1 year	
	Verify operation of solar array isolation device	1 year	
Mounting structures	Verify tightness and integrity of bolts and other fastening devices	1 year	
	Inspect for corrosion	5 year	

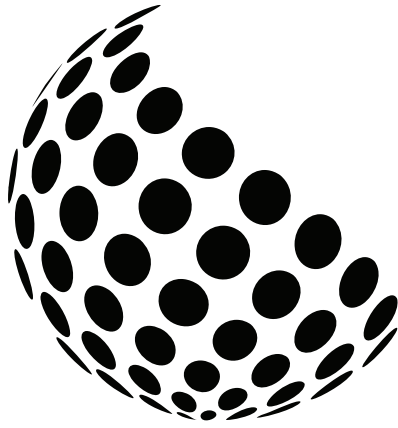
Connection *Diagram*



System *Production*

EFS Solar can only guarantee the production of your system based on the daylight hours below, this does not take into consideration loss from shading.

CITY	1 kW	2 kW	3 kW	4 kW	5 kW	6kW
Waikato	3.9	7.8	11.7	15.6	19.5	23.4



EFS
SOLAR

35 Clem Newby Road, Burbush 3200, NZ

Private & Confidential. All Rights Reserved EFS Solar 2025.